

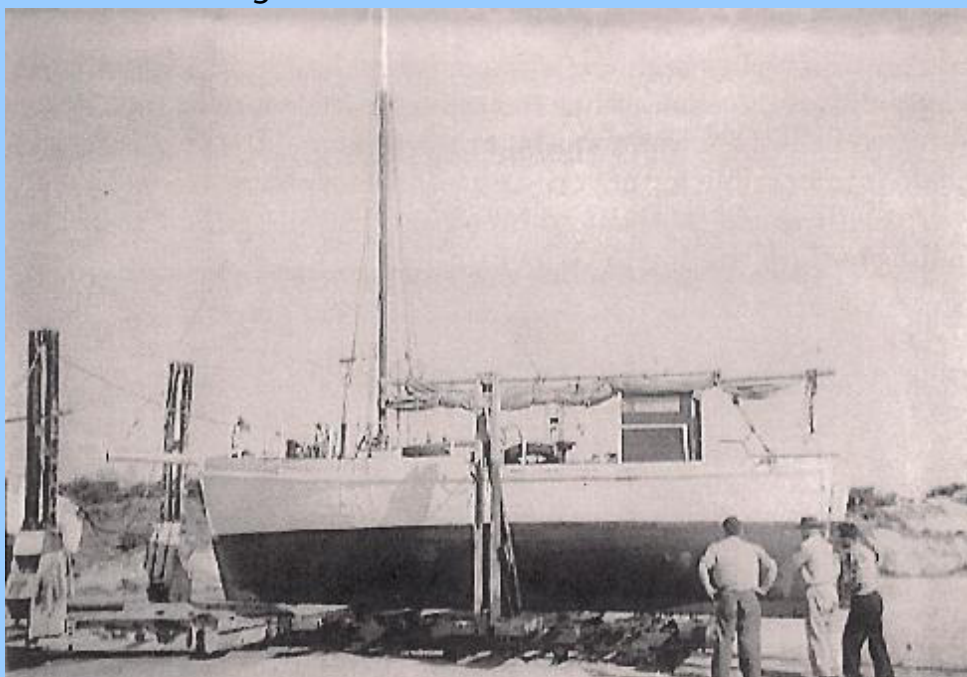
FOR SALE

HISTORIC SOUTH AUSTRALIAN WOODEN CUTTER 'ALANA'

Sadly, in
2013 ALANA
was broken up



Built in 1946 at Port Adelaide, this historic South Australian double ended cutter was used for fishing at Robe and Victor Harbor in the 1960's.



Peter Garvie

The *Alana* on the slipway at Robe, South Australia, in 1960.

The Boat is 8.5 metres (27 feet) in length, with a beam of 2.75 metres (11.5 feet) and has a draught of 1.2 metres (5 feet).



The vessel is moored at the Small Boat Club, Angas Inlet, Garden Island, South Australia. Vessel last slipped and anti fouled May 2009.

Construction: Carvel planking, Jarrah below the water line and Oregon above. Ballast is poured concrete and lead ingots. The cabin structure and deck is fibreglass over marine plywood. The mast is wood.

Hull: Is in good condition and has been regularly maintained. Underwent extensive restoration in 1992. (Survey certificate available.)

Equipment: 28 HP 3 cyl Ford Dexta diesel in good condition. Two heavy duty batteries, separate 12 volt battery and solar panel charger for TWO self activated bilge pumps. Ground tackle includes 30 metres of 7mm galvinised chain. 2 X 10 kg anchors with 50 gallon fuel and water tanks.

Cabin: Berthing space for 4 adults, gas stove with 3.5 kg gas bottle, sink, and cooler box. Bunk cushions, two fire extinguishers, 27 meg radio, flares, S.S. stanchions and rails, mainsail, storm sail, working jib and genoa. One large bronze winch and wind vane.

**Reluctant sale by owner. Asking price \$4,900 O.N.O.
Contact Desmond Steele, Ph 8261 5802 or mobile 0429339074**

